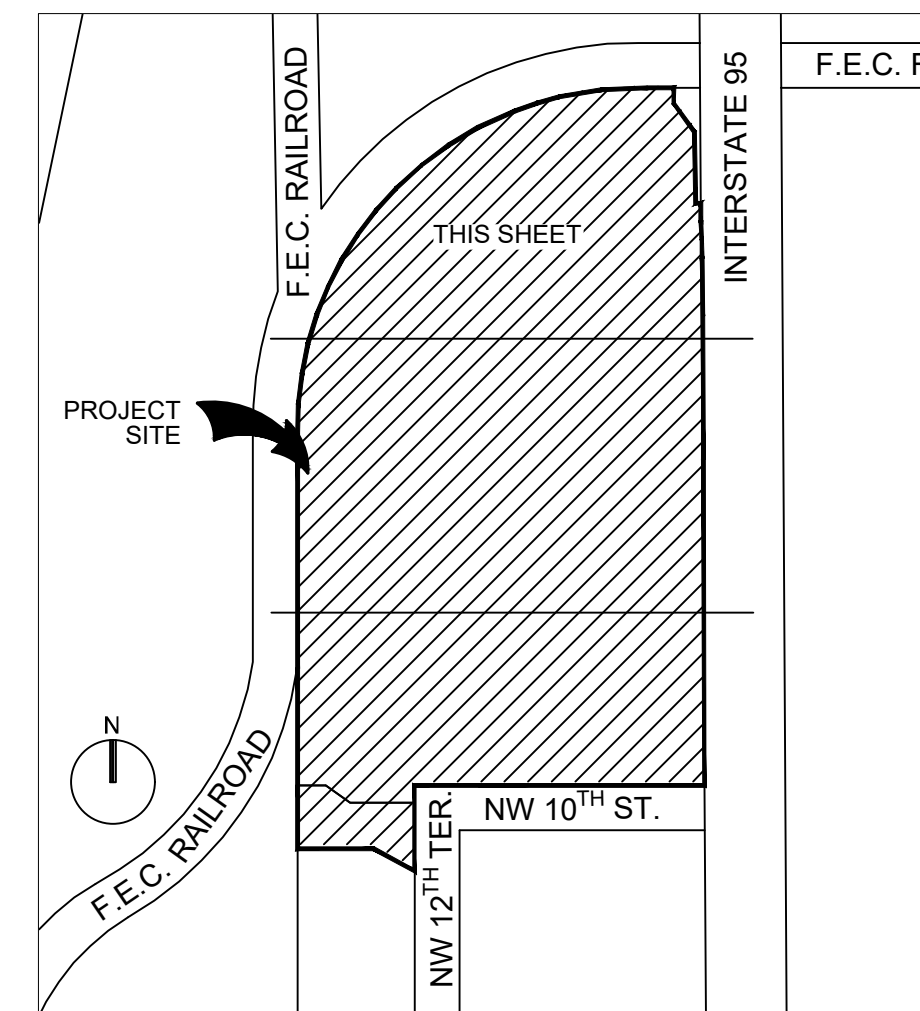
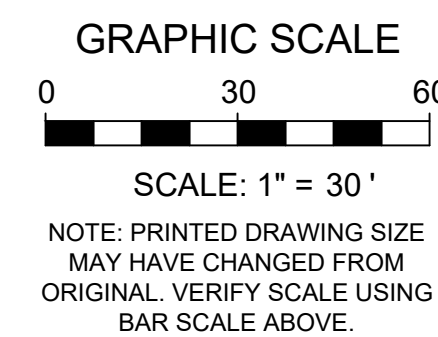
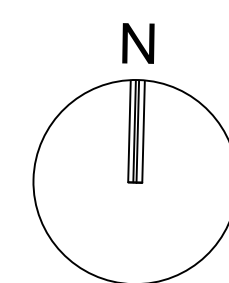
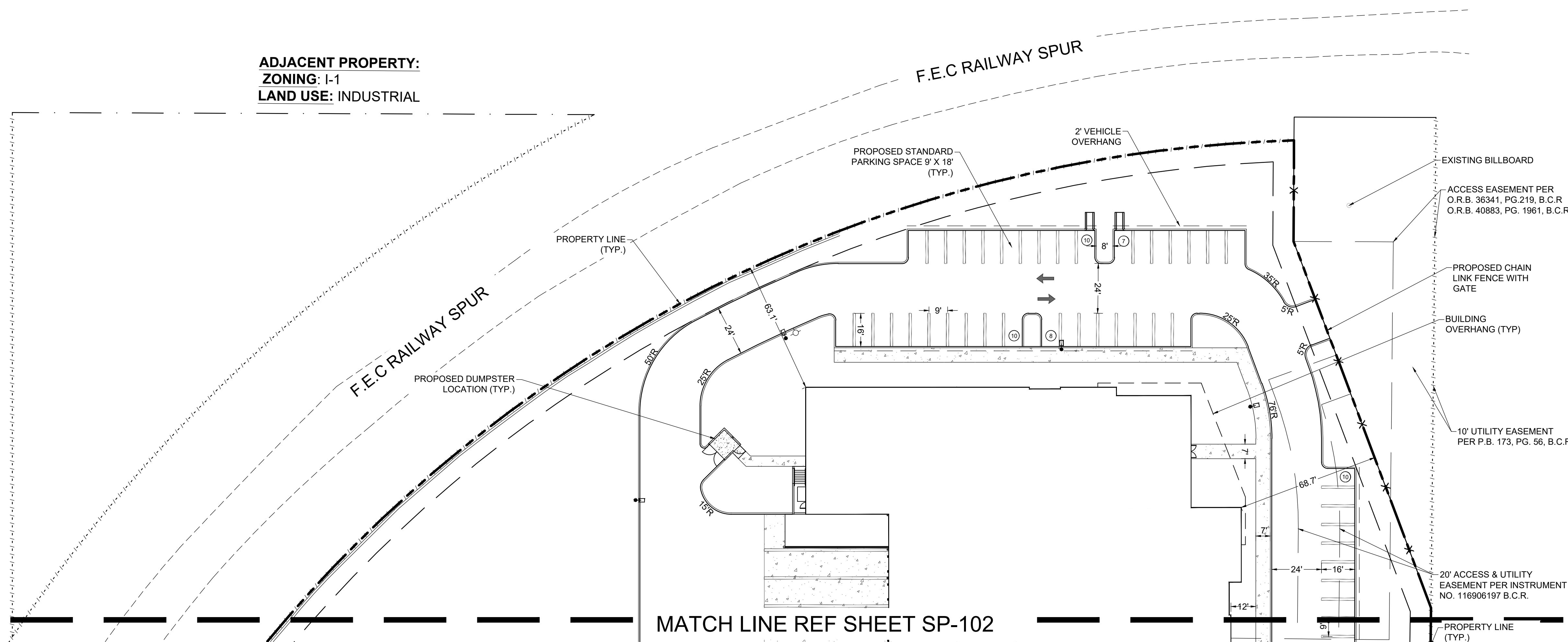


A



LOCATION SKETCH
(NOT TO SCALE)

ADJACENT PROPERTY:
ZONING: I-1
LAND USE: INDUSTRIAL



MATCH LINE REF SHEET SP-102



**301 East Atlantic Blvd.
Pompano Beach, FL 33060
PH: (954) 788-3400**

Florida Engineering Business License: CA7928
Florida Surveyor and Mapper Business License: LB6860
Florida Landscape Architecture Business License: LC260004

[illegible]

**RESPONSIBILITY FOR THE USE OF THESE
PLANS PRIOR TO OBTAINING PERMITS FROM
ALL AGENCIES HAVING JURISDICTION OVER
THE PROJECT WILL FALL SOLELY UPON THE
USER.**

ISSUE DATE:	10/15/2025
DESIGNED BY:	BB
DRAWN BY:	JS
CHECKED BY:	NW
BID-CONTRACT:	

THOMAS F. DONAHUE, P.E.
FLORIDA REG. NO. 60529
(FOR THE FIRM)

CLIENT

**FIRST
INDUSTRIAL**

PROJECT

**FIRST 95 DISTRIBUTION
CENTER- PHASE II
1000-1041 NW 12th Ter.
Pompano Beach, FL**

SHEET TITLE

SITE PLAN

SHEET
NUMBER **SP-101**

PROJECT NUMBER	10607.14
----------------	----------

457
 Plotted by: jaldas On 10/14/2025 8:43 AM

Drawing name: Q:\0607.14 - First 95 Distribution Center - PH 2 - First Industrial\Engineering\Cadd\0607.14-SP-101.dwg

STATISTICS: BPEI IMINABV